



small Talks: Infection Tracking

Name: Dave Johnson / IPRO Senior QI Specialist

Date: January 13, 2022 & January 19, 2022



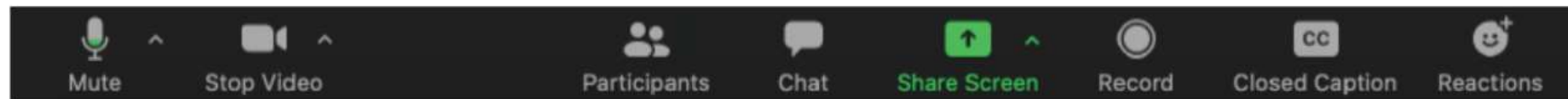
■ Healthcentric
Advisors
■ Qlarant

QIN-QIO
Quality Innovation Network -
Quality Improvement Organizations
CENTERS FOR MEDICARE & MEDICAID SERVICES
EQUALITY IMPROVEMENT & INNOVATION GROUP

Use Chat to introduce yourself & ask questions

How to use Zoom

At the bottom of your screen, you will see a black bar with icons:

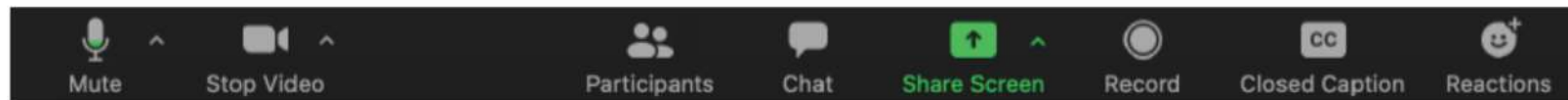


Chat **Everyone** for general comments or questions

Using Zoom

How to use Zoom

At the bottom of your screen, you will see a black bar with icons:



All participants
are able to
mute and
unmute
themselves

You can also
control
whether or
not your video
is showing

Welcome!

- Thank you for joining us today
- Please introduce yourself (name, organization & role, location) using the Chat feature
- Today's presentation only will be recorded.
- Although we want active participation, we ask that you please keep yourself on 'mute' during the presentation



■ Healthcentric
Advisors
■ Qlarant

QIN-QIO
Quality Innovation Network -
Quality Improvement Organizations
CENTERS FOR MEDICARE & MEDICAID SERVICES
EQUALITY IMPROVEMENT & INNOVATION GROUP

The IPRO QIN-QIO

The IPRO QIN-QIO

- A federally-funded Medicare Quality Innovation Network – Quality Improvement Organization (QIN-QIO) in contract with the Centers for Medicare & Medicaid Services (CMS)
- 12 regional CMS QIN-QIOs nationally

IPRO:

New York, New Jersey, and Ohio

Healthcentric Advisors:

Connecticut, Maine, Massachusetts, New Hampshire, Rhode Island, and Vermont

Qlarant:

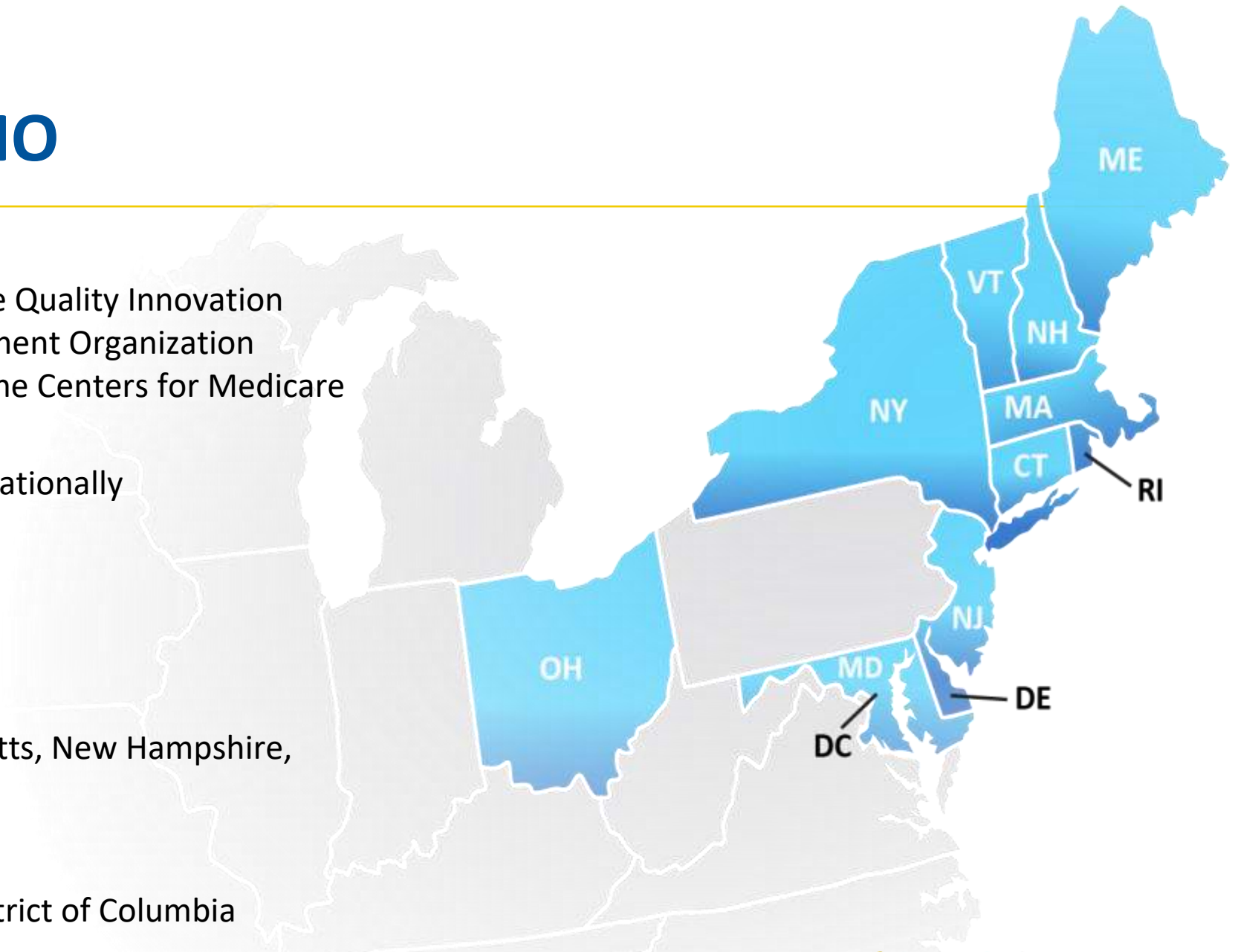
Maryland, Delaware, and the District of Columbia

Working to ensure high-quality, safe healthcare for
20% of the nation's Medicare FFS beneficiaries



■ Healthcentric
Advisors
■ Qlarant

QIN-QIO
Quality Innovation Network -
Quality Improvement Organizations
CENTERS FOR MEDICARE & MEDICAID SERVICES
EQUALITY IMPROVEMENT & INNOVATION GROUP



Learning Objectives

- Recognize CMS' Nursing Home requirements for infection prevention and control, including antibiotic prescribing (*the Challenge*)
- Describe how the IPRO tracking tool can help you meet CMS' requirements (*the Intervention*)
- Be prepared to implement this tool to comply with CMS' requirements (*the Result*)



small Talks: Infection Tracking

Name: Dave Johnson / IPRO Senior QI Specialist

Date: January 13, 2022 & January 19, 2022



■ Healthcentric
Advisors
■ Qlarant

QIN-QIO
Quality Innovation Network -
Quality Improvement Organizations
CENTERS FOR MEDICARE & MEDICAID SERVICES
EQUALITY IMPROVEMENT & INNOVATION GROUP



Goals for this session...

- To review some basic requirements from the Final Rule regarding Infection Prevention and Control including the tracking of Antibiotics
- To present the latest IPRO tracking tool to meet these needs



Final Rule – Infection Control F880

The intent of the regulation is to ensure that each facility...

- Establishes facility-wide systems for the prevention, identification, investigation and control of infections.
- The facility's surveillance system must include a data collection tool and the use of nationally-recognized surveillance criteria (i.e. McGeer, Loeb, NHSN)
- Infection site (i.e. type of infection)
- Pathogen (if available)
- Signs and Symptoms
- Resident Location
- Summary and Analysis of the number of residents who developed infections



Final Rule –Infection Prevention & Control Program F881

- The intent of the regulation is to ensure that each facility...
- Develops, promotes and implements a facility-wide system to monitor the use of antibiotics
- Antibiotic Stewardship Program
- Regular reporting on antibiotic use and antibiotic resistance to relevant staff such as prescribing clinicians and nursing staff
- Contain a system of reports to monitor antibiotic usage



“Antibiotic Stewardship”

- refers to a set of commitments and actions designed to optimize the treatment of infections while reducing the adverse events associated with antibiotic use. This can be accomplished through improving antibiotic prescribing, administration, and management practices thus reducing inappropriate use to ensure that residents receive the right antibiotic for the right indication, dose, and duration.



Final Rule – Infection Prevention & Control Program F881

- Summarizing antibiotic use...
- Rate of new starts
- Types of antibiotics prescribed
- Days of antibiotic treatment (i.e. per 1000 resident days)
- Establish a frequency and mode or mechanism of feedback to prescribing practitioners regarding their antibiotic use, feedback on prescribing practices and compliance with facility antibiotic use protocols



Challenge

Does your facility have a current system in place to comply with even the basics of the Final Rule regarding Infection Prevention and Control?



■ Healthcentric
Advisors
■ Qlarant

QIN-QIO
Quality Innovation Network -
Quality Improvement Organizations
CENTERS FOR MEDICARE & MEDICAID SERVICES
EQUALITY IMPROVEMENT & INNOVATION GROUP



IPRO's Infection & Antibiotic Tracking Tool

One tool in a simple Excel format that tracks...

- Infections
- Antibiotics
- Days of Therapy
- Prophylaxis Use
- Infection Rates (Facility-wide and Location-Specific)
- Prescribing patterns by all practitioners (combined)
- Prescribing pattern reports by individual practitioners
- All calculations, summaries and graphs are instantaneous



■ Healthcentric
Advisors
■ Qlarant

QIN-QIO
Quality Innovation Network -
Quality Improvement Organizations
CENTERS FOR MEDICARE & MEDICAID SERVICES
EQUALITY IMPROVEMENT & INNOVATION GROUP



IPRO's Infection & Antibiotic Tracking Tool

- This one tool is built to be used monthly
- Each month is saved as a separate file
- A “month-end routine” automatically removes infections that have resolved, residents who have been discharged and antibiotics that have been stopped
- All remaining data is automatically saved to a new file to continue tracking for the next month
- All summaries and graphs are formatted to easy printing
- All data may be “carved up” by up to 16 separate user-defined locations
- Ability to track prescribing patterns for up to 25 separate prescribing practitioners





Data Entry Sheet

INFECTION & ANTIBIOTIC TRACKING TOOL													
<div> <div>Add New Case</div> <div>Sort by Resident Name</div> <div>Month End Routine</div> </div>													
Location/ Unit	Resident Name	ST/LT	Room/Bed	Date of Admission	Infection Resolved or Resident Discharge (enter X)	Date of Infection	Date of Resolution	Age of Infection in Days	Days to Resolve	Facility Acquired?	Infection	Fever @ Onset	Symptom
TOTALS --->													
As	Location/Unit as referenced on "Location Designation" tab. Choose from dropdown.	Reported From---	06/01/20	This material was prepared by the IPRO QIN-QIO, a collaboration of Healthcentric Advisors, Qlarant and IPRO, serving as the Medicare Quality Innovation Network-Quality Improvement Organization for the New England region under contract with the Centers for Medicare & Medicaid Services (CMS), an agency of the U.S. Department of Health and Human Services. The contents do not necessarily reflect CMS policy. 12SOW-IPRO-QIN-T									
06/3		Reported Through---	06/30/20										

INSTRUCTIONS

Data Entry Sheet

Prescriber Listing

Location Designation

ALL Prescriber ABX Practice

Prescriber ABX Detail

Facility ...



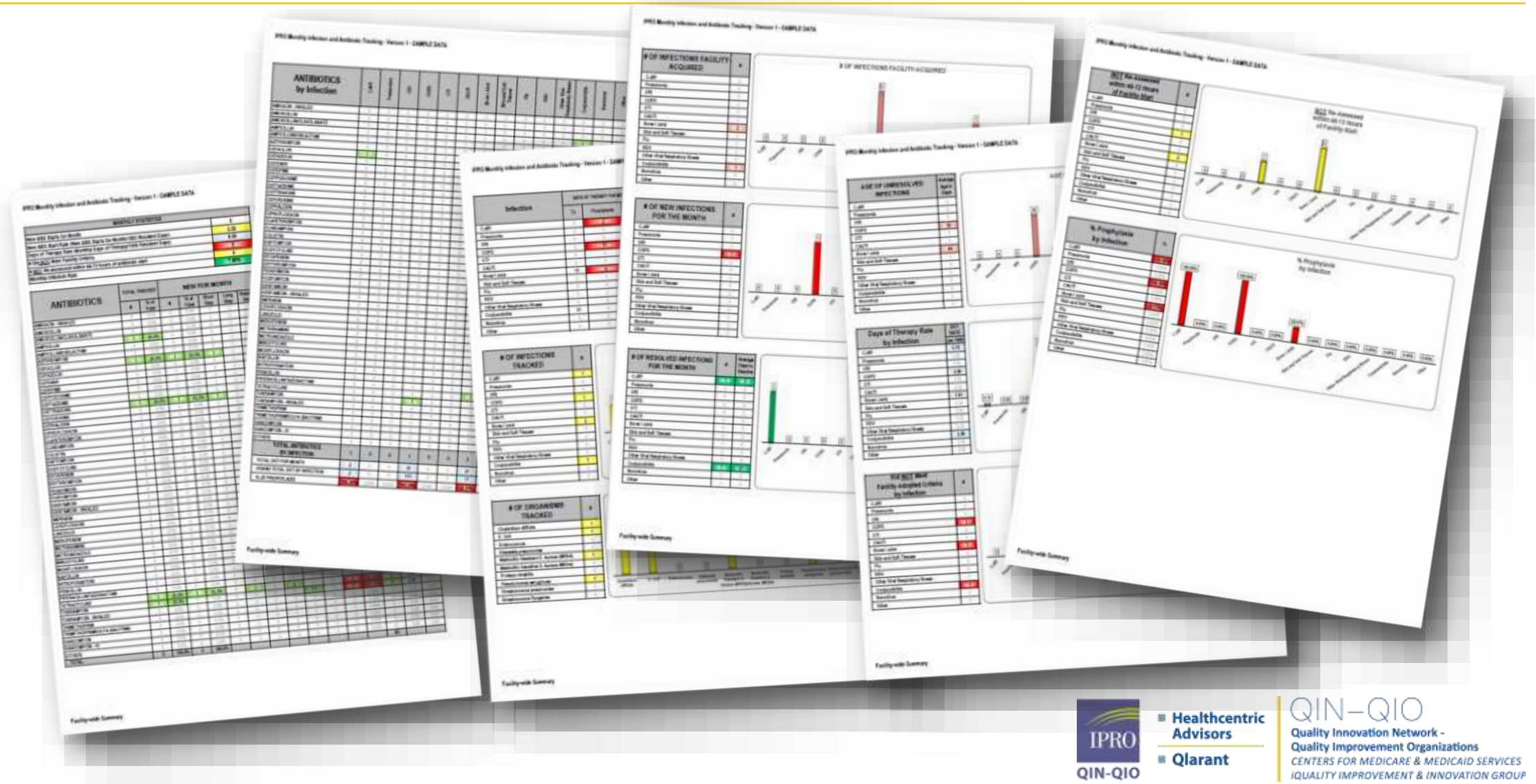
“Location Designation” Sheet

Location / Unit	*Facility Designation*	Resident Days	Average Daily Census	Total Resident Days Reported-->	
				Average Daily Census-->	0
Location 1 -			0	For the green cells on the left, enter your "Resident Days" for each designated location.	<div style="border: 1px solid black; padding: 5px;"> <p>These two figures should balance. Otherwise, the entered "Location" days are incorrect.</p> </div>
Location 2 -			0		
Location 3 -			0		
Location 4 -			0		
Location 5 -			0	The "Total Resident Days" should match your Total Resident Days at the end of the month being tracked.	
Location 6 -			0	These statistics will be used to automatically calculate your individualized infection rate per 1000 resident days on each "Summary" sheet.	
Location 7 -			0		
Location 8 -			0		
Location 9 -			0		
Location 10 -			0	<div style="border: 1px solid black; padding: 2px; display: inline-block;"> <p>Clear ALL Resident Days</p> </div>	
TOTAL RESIDENT DAYS FOR MONTH BEING TRACKED		0	0		
(This should equal the "Total Resident Days Reported" as entered above.)					

Next to each designated location on the above left, designate (or name) your facility-specific description of the separate area you would like to have summarized and graphed in the yellow cell next to that Location #.



“Facility-wide Summary”



Prescriber Listing “tab”

PRESCRIBER (LAST NAME)

Sultan
Viola
Khan
Sharon NP
Namaiko NP

Type "Prescriber's" Last Name in the yellow cells to the left..

The names will appear in the dropdown of choices on the "Data Entry Sheet" and will flow to the Summaries.

This dropdown is restricted to 25 separate names.

"Click" the button below to sort the dropdown alphabetically.

Sort Prescriber by

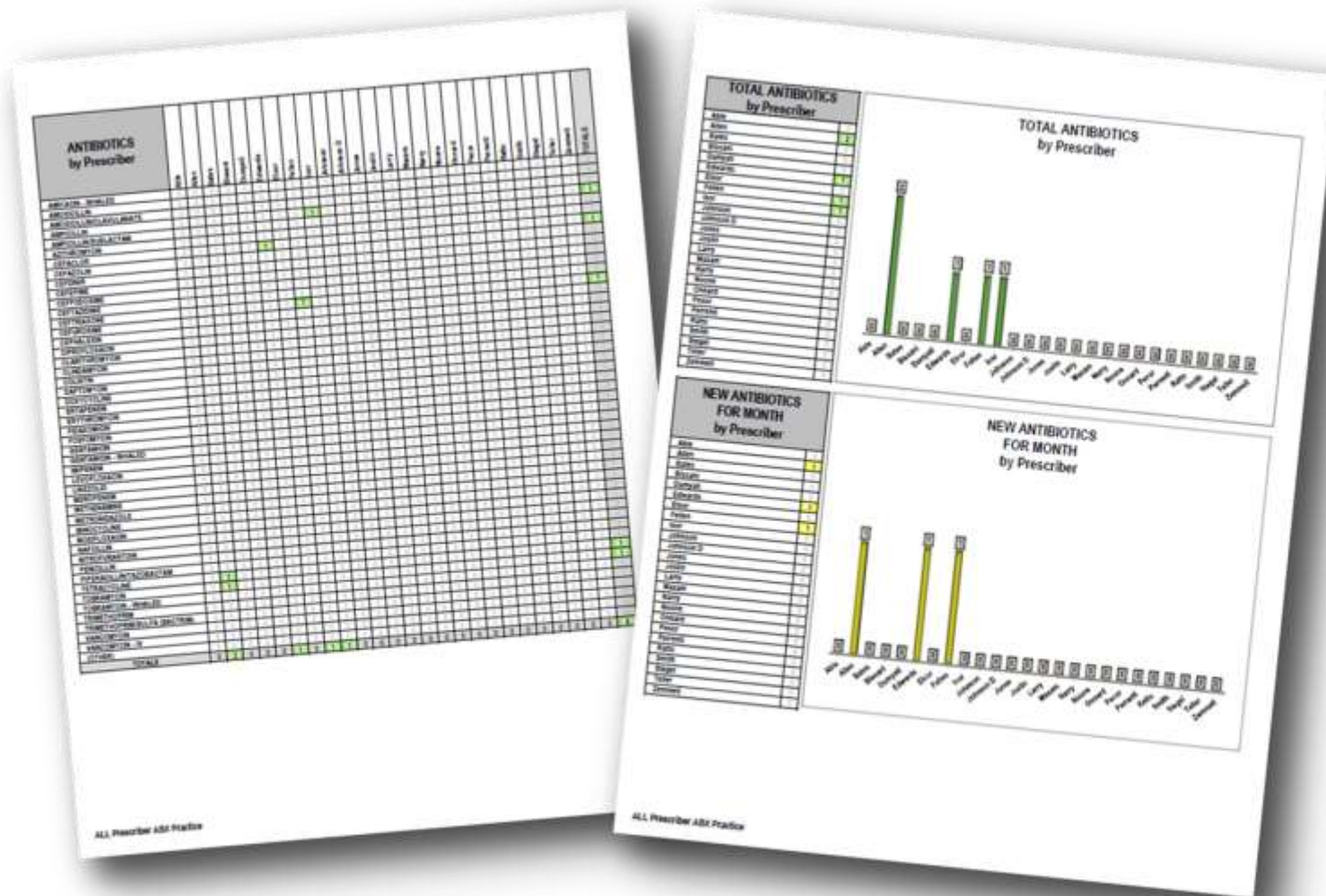
Table Data:

Room/Bed	ABX Start Date	ABX ACTUAL End Date (do not enter date ahead of time)	DOT for Month	TOTAL DOT w/ End Date	TOTAL DOT w/o End Date	Hospital Start?	Prescriber	Prophylaxis or Treatment	Re-Assessment within 48-72 hours of Facility-Start?	Additional Comments
S330	3/10/2020	3/20/2020	11	11						
S311	3/18/2020	3/28/2020	11	11		No	Namaiko NP	Treatment	No	
S311	3/31/2020		1		1	No	Khan		Yes	
S318	3/24/2020	3/24/2020	1			No	Khan	Treatment	Yes	
S318	3/27/2020		5	5		No	Namaiko NP	Treatment	Yes	
S3	3/7/2020	3/14/2020	11	11		No	Khan	Treatment	Yes	
S25	3/5/2020	3/15/2020	8	8		No	Sharon NP	Treatment	Yes	
S2	3/6/2020	3/13/2020	8	8		No	Namaiko NP	Treatment	Yes	confirmed flu on unit dose chgd to active tx
S2	3/2/2020	3/9/2020	8	8		No	Viola	Treatment	No	Moderate Staph Aureus
						No	Sharon NP	Treatment	No	Just tx in Feb. Note to MD
							Sultan Viola Khan Sharon NP Namaiko NP		Yes	

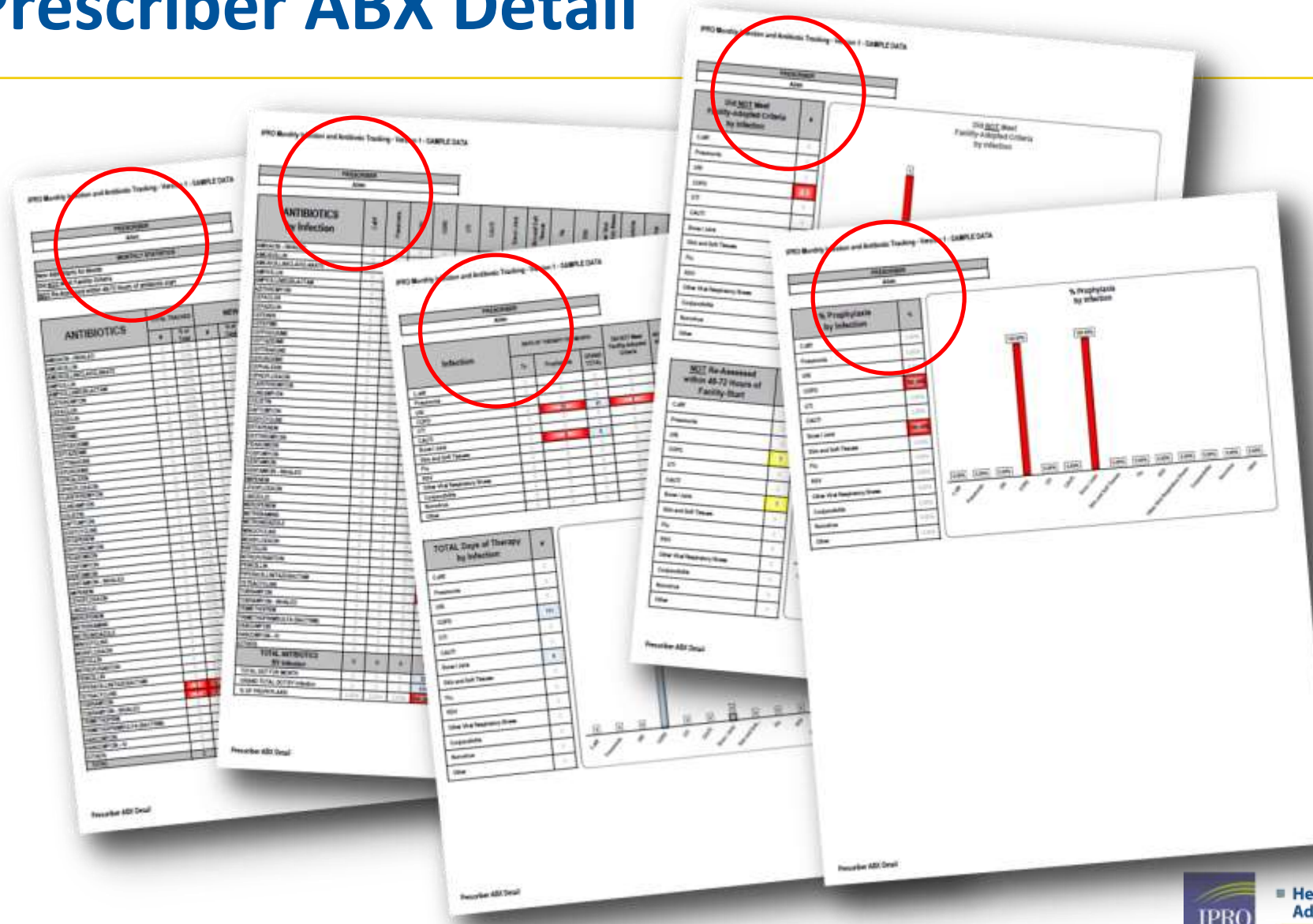
Navigation Bar: Data Entry Sheet, Prescriber Listing, Location Designation

Footer: IPRO QIN-QIO, Healthcentric Advisors, Qlarant, QIN-QIO Quality Innovation Network - Centers for Medicare & Medicaid Services, Quality Improvement & Innovation Group

ALL Prescriber ABX Practice



Prescriber ABX Detail



“Nationally Recognized Surveillance Criteria”

[illegible]

Element 3 in the 5 elements in QAPI...

- Feedback, Data Systems and Monitoring
“The facility puts in place systems to monitor care and services, drawing data from multiple sources.”
- Once information has been gathered, you need to organize it in a way that helps your team understand what is happening.
- The effective use of data will ensure that decisions are being made based on “fact” and not on an assumption of the truth.
- QAPI Teams and Performance Improvement Project (PIP) Teams need data to ensure they are targeting the right areas.



Intervention

- Establish a competency with the requirements of the Final Rule
- Ensure that you have a strategy to meet those requirements
- Make sure that your strategy includes a useful process/tool to collect, review, and analyze your data on infections and antibiotic prescribing patterns
- Develop a timely process to review your collected data with appropriate clinicians



How do you gain access to the tracking form?

To gain access/download to the Monthly Infection and ABX Tracking Tool, simply go to this link.... <https://qi.ipro.org/2020/06/10/covid19-surveillance-detection-tool/>

You will be taken to a page where, if you scroll down, you will see buttons to download the instruction booklet and “Request the Tool” itself.

You will be asked to enter your e-mail, name, company and state (for our own internal tracking).



Resource

- <https://www.cms.gov/Medicare/Provider-Enrollment-and-Certification/GuidanceforLawsAndRegulations/Nursing-Homes>



■ Healthcentric
Advisors
■ Qlarant

QIN-QIO
Quality Innovation Network -
Quality Improvement Organizations
CENTERS FOR MEDICARE & MEDICAID SERVICES
EQUALITY IMPROVEMENT & INNOVATION GROUP





Contact information:

Name: David L. Johnson, NHA
Senior QI Specialist

Email: djohnson@ipro.org

Phone: (413) 447-6728 , cell Tue/Wed



■ Healthcentric
Advisors
■ Qlarant

QIN-QIO
Quality Innovation Network -
Quality Improvement Organizations
CENTERS FOR MEDICARE & MEDICAID SERVICES
EQUALITY IMPROVEMENT & INNOVATION GROUP



Benefits of Boosters

Recent evidence shows that among healthcare and other frontline workers, COVID 19 vaccine effectiveness has decreased over time, especially in those 65 and older, at preventing infection or milder illness with symptoms.

- Boosters shots increase immune response
- Boosters shots provide improved protection against becoming infected with COVID-19
- Booster shots help prevent COVID-19 with symptoms

<https://www.cdc.gov/coronavirus/2019-ncov/vaccines/booster-shot.html>

Q & A Session

- Please feel free to put your questions in Chat – this is your opportunity to share/ask/clarify
- Thank you for participating!



■ Healthcentric
Advisors
■ Qlarant

QIN-QIO
Quality Innovation Network -
Quality Improvement Organizations
CENTERS FOR MEDICARE & MEDICAID SERVICES
EQUALITY IMPROVEMENT & INNOVATION GROUP

Leave in Action

Tips for success:

- Identify 1 or 2 champions to take the lead on this project
- Small steps of change: for example, start implementing the new process on one unit for two weeks, then evaluate and adjust as needed
- Reach out to your QIN-QIO with questions or needs



■ Healthcentric
Advisors
■ Qlarant

QIN-QIO
Quality Innovation Network -
Quality Improvement Organizations
CENTERS FOR MEDICARE & MEDICAID SERVICES
EQUALITY IMPROVEMENT & INNOVATION GROUP

Office Hour Follow Up

- Join us on Feb 17th at 12PM for a check in with the QIO Office Hours.
 - Share how it's going with your new intervention
 - Ask questions
 - Learn from your peers
- Monthly Office Hours
 - Join Zoom Meeting
 - <https://healthcentricadvisors.zoom.us/j/85491530818?pwd=SUlld3QyZllvQURJTVBFdzJnbnRqdz09>

Evaluation form

Please take just a few minutes to complete our evaluation form here:

<https://www.surveymonkey.com/r/VZYYW3F>

This link will also be emailed to all registered attendees.

Your feedback is very important and will help guide us as we prepare future Small Talks and other educational events.



■ Healthcentric
Advisors
■ Qlarant

QIN-QIO
Quality Innovation Network -
Quality Improvement Organizations
CENTERS FOR MEDICARE & MEDICAID SERVICES
EQUALITY IMPROVEMENT & INNOVATION GROUP

Small Talks series – see what's coming up next

- Adverse Drug Events:
 - January 27, 2022
 - February 2, 2022



Learn More & Stay Connected



<https://qi.ipro.org/>

Working to ensure high-quality, safe, and effective health care.

Highlighted Blog Posts

We've added new COVID-19 resources

Free Training: Nursing Home COVID-19 Preparedness

Follow IPRO QIN-QIO



@IPROQINQIO



@IPROQINQIO



@IPRO QIN-QIO



IPRO QIN-QIO

This material was prepared by the IPRO QIN-QIO, a Quality Innovation Network-Quality Improvement Organization, under contract with the Centers for Medicare & Medicaid Services (CMS), an agency of the U.S. Department of Health and Human Services (HHS). Views expressed in this material do not necessarily reflect the official views or policy of CMS or HHS, and any reference to a specific product or entity herein does not constitute endorsement of that product or entity by CMS or HHS. 12SOW-IPRO-QIN-TA-AA-22-530



Healthcentric
Advisors
Qlarant

QIN-QIO
Quality Innovation Network -
Quality Improvement Organizations
CENTERS FOR MEDICARE & MEDICAID SERVICES
EQUALITY IMPROVEMENT & INNOVATION GROUP

Thank You

Thank you for your continued partnership and commitment to quality improvement.

