



Welcome!

We will get started promptly at 12 noon.



■ Healthcentric
Advisors
■ Qlarant

QIN-QIO
Quality Innovation Network -
Quality Improvement Organizations
CENTERS FOR MEDICARE & MEDICAID SERVICES
EQUALITY IMPROVEMENT & INNOVATION GROUP



IPRO QIN-QIO Chronic Kidney Disease Awareness & Prevention Programs

Name: Ingris Garcia RDN, CDN, CDCES, CPHQ

Date: March 24th and March 30th



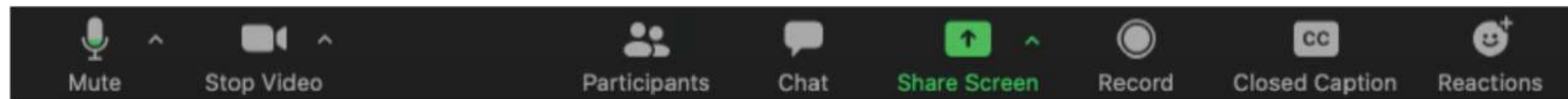
■ Healthcentric
Advisors
■ Qlarant

QIN-QIO
Quality Innovation Network -
Quality Improvement Organizations
CENTERS FOR MEDICARE & MEDICAID SERVICES
EQUALITY IMPROVEMENT & INNOVATION GROUP

Use Chat to introduce yourself & ask questions

How to use Zoom

At the bottom of your screen, you will see a black bar with icons:



Chat **Everyone** for general comments or questions

Welcome!

- Today's session is being recorded
- Although we want active participation, we ask that you please keep yourself on 'mute' during the presentation
- Please introduce yourself (name, organization & role, location) using the Chat feature



■ Healthcentric
Advisors
■ Qlarant

QIN-QIO
Quality Innovation Network -
Quality Improvement Organizations
CENTERS FOR MEDICARE & MEDICAID SERVICES
EQUALITY IMPROVEMENT & INNOVATION GROUP

The IPRO QIN-QIO

The IPRO QIN-QIO

- A federally-funded Medicare Quality Innovation Network – Quality Improvement Organization (QIN-QIO) in contract with the Centers for Medicare & Medicaid Services (CMS)
- 12 regional CMS QIN-QIOs nationally

IPRO:

New York, New Jersey, and Ohio

Healthcentric Advisors:

Connecticut, Maine, Massachusetts, New Hampshire, Rhode Island, and Vermont

Qlarant:

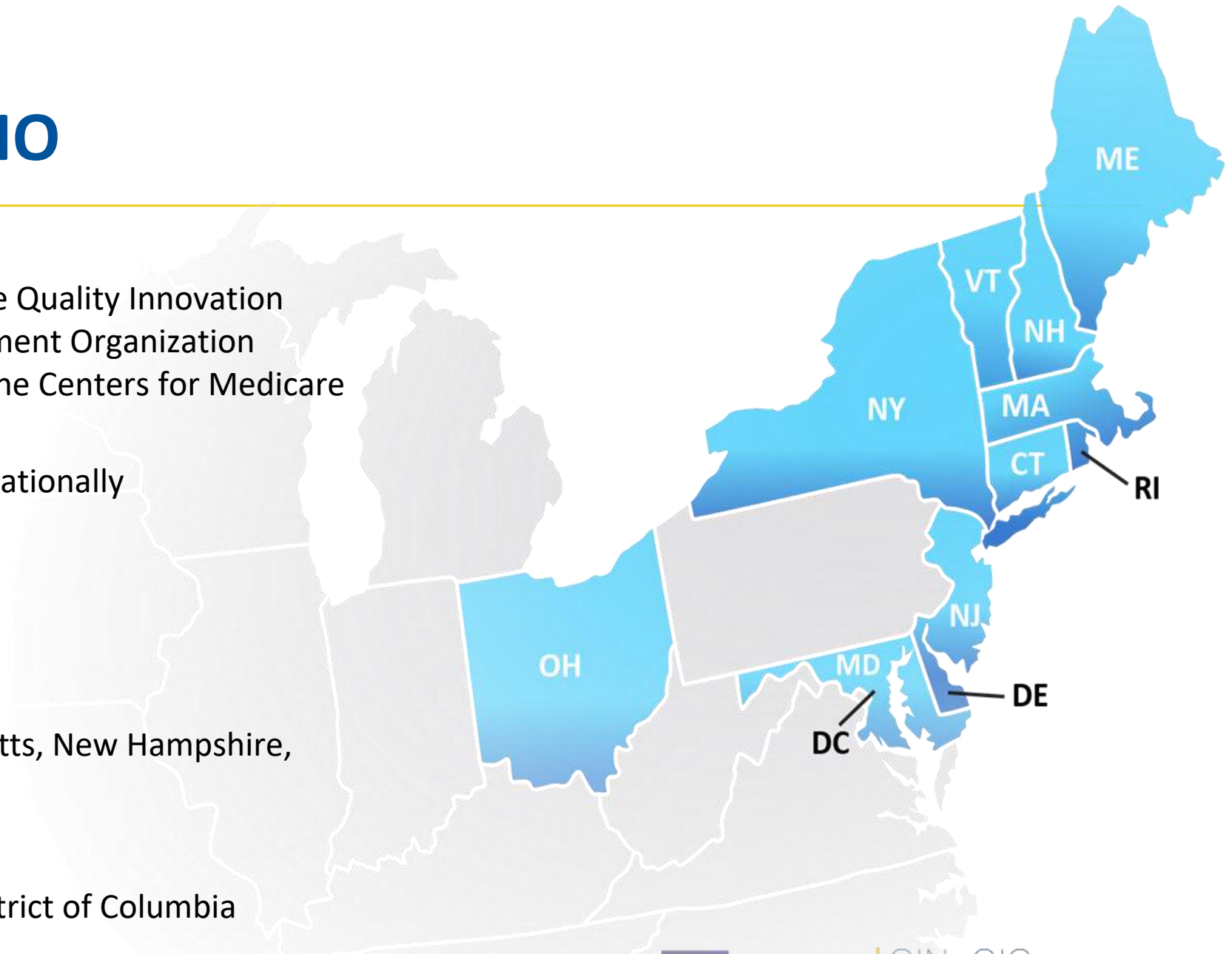
Maryland, Delaware, and the District of Columbia

Working to ensure high-quality, safe healthcare for
20% of the nation's Medicare FFS beneficiaries



■ Healthcentric
Advisors
■ Qlarant

QIN-QIO
Quality Innovation Network -
Quality Improvement Organizations
CENTERS FOR MEDICARE & MEDICAID SERVICES
EQUALITY IMPROVEMENT & INNOVATION GROUP



IPRO QIN-QIO *small Talk* series January-June 2022

Our *small Talks* are short, impactful presentations designed to meet your needs during this uniquely challenging time.

Two different topics will be presented on a monthly basis and each *small Talk* will:

*Consider a **challenge***

*Identify **interventions***

*Guide you to a specific **result** or outcome*





IPRO QIN-QIO Chronic Kidney Disease Awareness & Prevention Programs

Name: Ingris Garcia RDN, CDN, CDCES, CPHQ

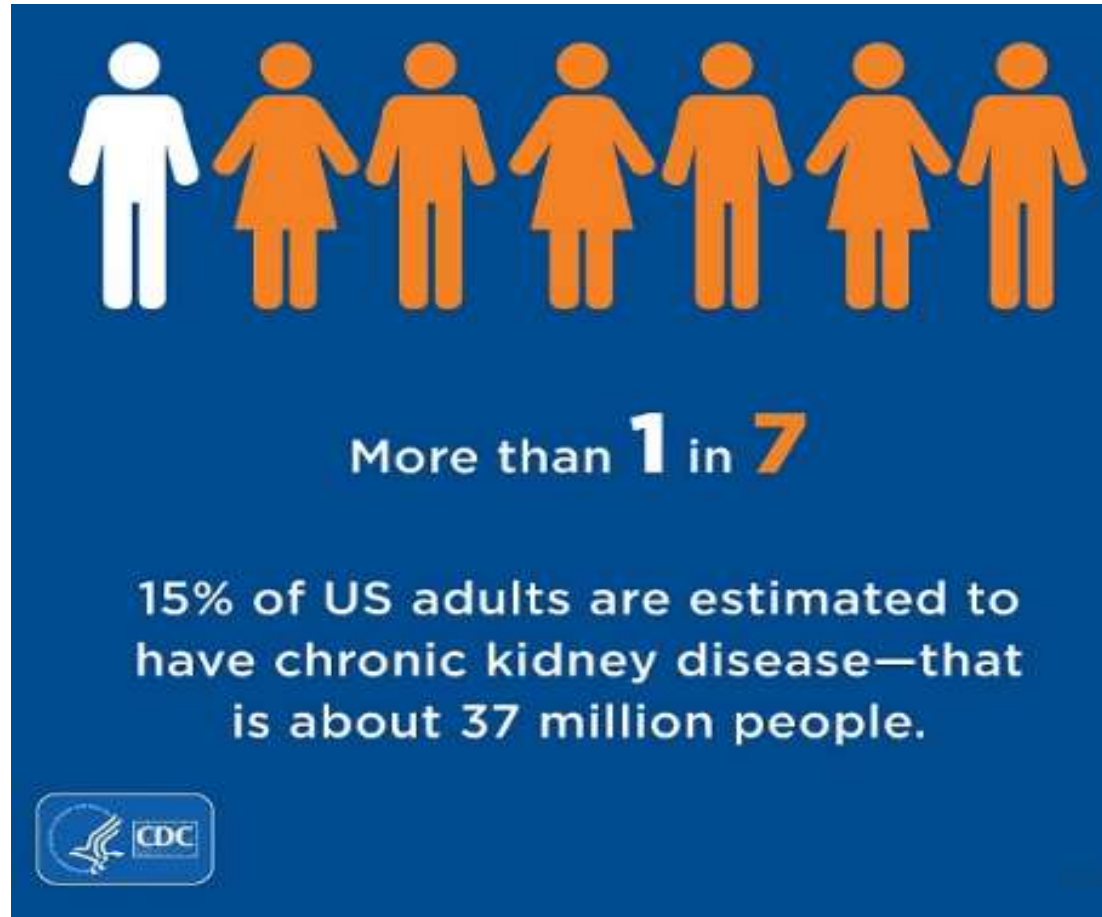
Date: March 24th and March 30th



■ Healthcentric
Advisors
■ Qlarant

QIN-QIO
Quality Innovation Network -
Quality Improvement Organizations
CENTERS FOR MEDICARE & MEDICAID SERVICES
EQUALITY IMPROVEMENT & INNOVATION GROUP

The Impact of Chronic Kidney Disease



According to the Centers for Disease Control:

- 90% of US adults that have CKD don't know they have it
- CKD increases the risk for other chronic conditions
- Medicare costs for the care of CKD equals more than \$87 billion dollars

Quick Overview



1

CHALLENGE 1: Lack of early screening and detection of CKD impacts treatment and progression of this disease.

2

INTERVENTION: The IPRO tools can engage patients and families, help educate those at greatest risk, and provide just-in-time evidence based support for clinicians.

3

RESULT: Increase screening for people at risk, engage in clear, patient-centered conversations about CKD with patients, families, and care partners, and increase referrals to slow progression.

We'd Love to Hear from You...

Please unmute or add a response to Chat.



Does your practice have a process for early identification and screening on high risk patients for CKD?

Educational Video Series



Support patients so they can make informed choices about preventing and managing chronic kidney disease (CKD).

<https://qi.ipro.org/2022/02/07/ckd/>



■ Healthcentric
Advisors
■ Qlarant

QIN-QIO
Quality Innovation Network -
Quality Improvement Organizations
CENTERS FOR MEDICARE & MEDICAID SERVICES
EQUALITY IMPROVEMENT & INNOVATION GROUP

Chronic Kidney Disease (CKD) Screening and Management Mobile Apps

**IPRO's evidence-based applications for download or web use to support
Clinicians & Patients**

<https://ckdmobileapps.ipro.org/>



■ Healthcentric
Advisors
■ Qlarant

QIN-QIO
Quality Innovation Network -
Quality Improvement Organizations
CENTERS FOR MEDICARE & MEDICAID SERVICES
EQUALITY IMPROVEMENT & INNOVATION GROUP

CKD Screening App



The Clinician CKD Screening app offers a simple solution for guiding clinicians in the assessment of CKD and proper selection of labs for diagnosis and staging of CKD.

The app also provides a **CKD Conversation Starter**, which delivers guidance on how best to approach the potentially difficult conversation of a new and serious diagnosis.

Web-Based Version: <https://clinicianckd.ipro.org/>



Download from the App Store and Google Play. Access the web version @ <https://clinicianckd.ipro.org>



■ Healthcentric
Advisors
■ Qlarant

QIN-QIO
Quality Innovation Network -
Quality Improvement Organizations
CENTERS FOR MEDICARE & MEDICAID SERVICES
EQUALITY IMPROVEMENT & INNOVATION GROUP

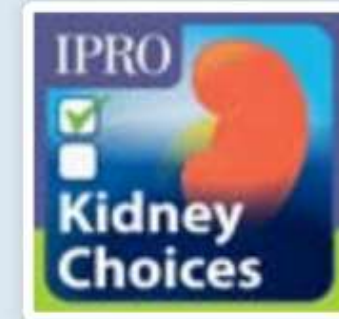
Kidney Choice App



CKD on Track allows patients to access their Medicare Blue Button data to track laboratory monitoring, provider visits, and selective drug dispensing, and to provide notifications of when the next lab, provider visit or drug refill is due. The app also offers patients the ability to communicate due dates with their healthcare providers electronically.

Kidney Treatment Choices allows patients to explore each end-stage renal disease treatment option: hemodialysis, peritoneal dialysis, transplant, and conservative care. While patients explore options they can simultaneously create a list of questions about each option; these questions can then be transmitted electronically to their healthcare provider for shared decision making.

Web-Based Version: <https://kidneychoices.ipro.org/>



Download from the App Store and Google Play. Access the web version @ <https://kidneychoices.ipro.org>



■ Healthcentric
Advisors
■ Qlarant

QIN-QIO
Quality Innovation Network -
Quality Improvement Organizations
CENTERS FOR MEDICARE & MEDICAID SERVICES
EQUALITY IMPROVEMENT & INNOVATION GROUP

Resources



■ Healthcentric
Advisors
■ Qlarant

QIN-QIO
Quality Innovation Network -
Quality Improvement Organizations
CENTERS FOR MEDICARE & MEDICAID SERVICES
EQUALITY IMPROVEMENT & INNOVATION GROUP



Contact information:

Name: Ingris Garcia RDN, CDN, CDCES, CPHQ

Email: igarcia@ipro.org

Phone: 516-353-4151



■ Healthcentric
Advisors

■ Qlarant

QIN-QIO
Quality Innovation Network -
Quality Improvement Organizations
CENTERS FOR MEDICARE & MEDICAID SERVICES
EQUALITY IMPROVEMENT & INNOVATION GROUP

Chat In

Please unmute yourself or use the chat feature to share questions, ideas, success strategies, and/or lessons learned



Improvement is a Team
Support



■ Healthcentric
Advisors
■ Qlarant

QIN-QIO
Quality Innovation Network -
Quality Improvement Organizations
CENTERS FOR MEDICARE & MEDICAID SERVICES
EQUALITY IMPROVEMENT & INNOVATION GROUP

Leaving in Action

Tips for success:

- Access the tool from the IPRO QIN-QIO
Resource: <https://qi-library.ipro.org/>
- Small steps of change: introduce your patients to the IPRO QIN-QIO CKD Awareness and Prevention Program videos and Chronic Kidney Disease (CKD) Screening and Management Mobile Apps
- Reach out to our IPRO QIN-QIO team with questions or needs

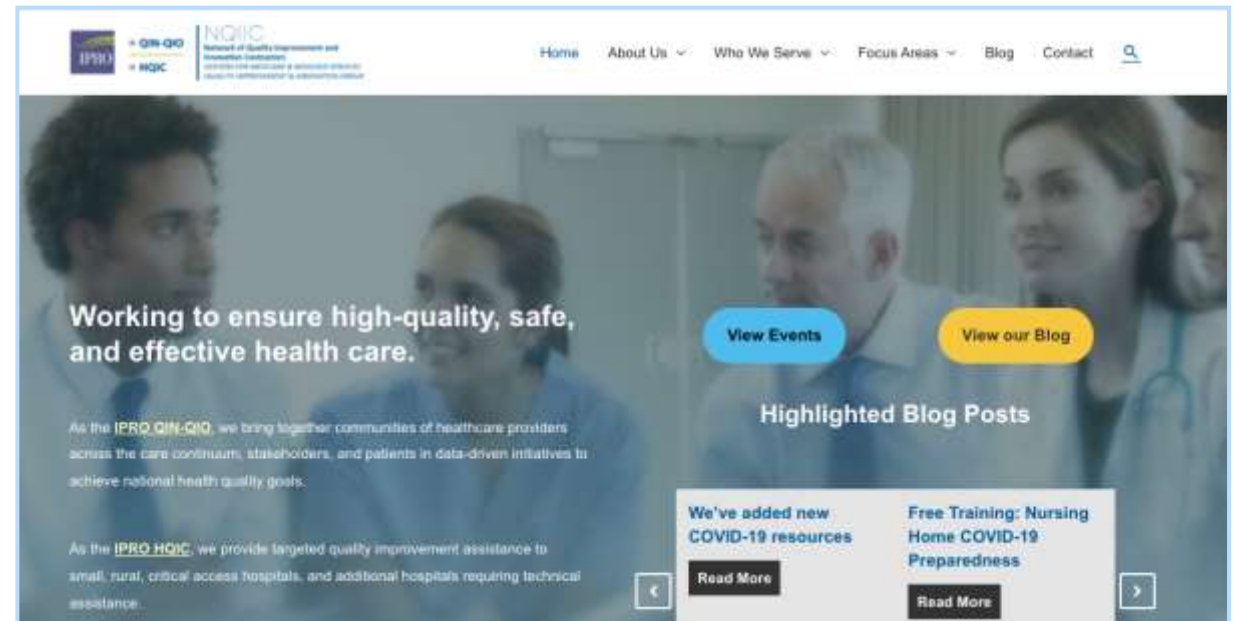
Benefits of Boosters

Recent evidence shows that among healthcare and other frontline workers, COVID 19 vaccine effectiveness has decreased over time, especially in those 65 and older, at preventing infection or milder illness with symptoms.

- Boosters shots increase immune response
- Boosters shots provide improved protection against becoming infected with COVID-19
- Booster shots help prevent COVID-19 with symptoms

<https://www.cdc.gov/coronavirus/2019-ncov/vaccines/booster-shot.html>

Learn More & Stay Connected



Follow IPRO QIN-QIO



@IPROQINQIO



@IPROQINQIO



@IPRO QIN-QIO



IPRO QIN-QIO

This material was prepared by the IPRO QIN-QIO, a Quality Innovation Network-Quality Improvement Organization, under contract with the Centers for Medicare & Medicaid Services (CMS), an agency of the U.S. Department of Health and Human Services (HHS). Views expressed in this material do not necessarily reflect the official views or policy of CMS or HHS, and any reference to a specific product or entity herein does not constitute endorsement of that product or entity by CMS or HHS. 12SOW-IPRO-QIN-TA-AA-22-599



■ Healthcentric
Advisors
■ Qlarant

QIN-QIO
Quality Innovation Network -
Quality Improvement Organizations
CENTERS FOR MEDICARE & MEDICAID SERVICES
EQUALITY IMPROVEMENT & INNOVATION GROUP

Let Us Know More...



Your feedback is critically important and will help guide us as we prepare future small Talks and other educational events.

Please take just a few minutes to complete our session evaluation:

<https://www.surveymonkey.com/r/KRPYCVS>

Mark your calendar for upcoming sessions



Access our calendar of events to view upcoming sessions:

<https://qi.ipro.org/upcoming-events/>

Other Upcoming Sessions

- 4/7 & 4/13: *Health Equity at End of Life: Enhancing Access to Advance Directives & Palliative Care*
- 4/21 & 4/27: *Heart Failure – Patient self-management supports better outcomes (*
- 5/5 & 5/11: *Opioid Use Disorder & Related Behaviors: Supporting Patients & Each Other*

Check in with the QIO - Office Hours

- Share how it's going with your new intervention(s)
- Ask questions
- Learn from your peers

- Join our next session: 04/14 @ 12pm

- <https://healthcentricadvisors.zoom.us/j/85491530818?pwd=SUIld3QyZllvQURJTVBFdzJndnRqdz09>



Healthcentric
Advisors
Qlarant

QIN-QIO
Quality Innovation Network -
Quality Improvement Organizations
CENTERS FOR MEDICARE & MEDICAID SERVICES
EQUALITY IMPROVEMENT & INNOVATION GROUP

Thank You

**Thank you for your
continued
partnership and
commitment to
quality
improvement.**

