

# IP3

I PRO QIN/QIO Team

We are here to support you!

This material was prepared by I PRO QIN-QIO, a Quality Innovation Network-Quality Improvement Organization, under contract with the Centers for Medicare & Medicaid Services (CMS), an agency of the U.S. Department of Health and Human Services. Views expressed in this material do not necessarily reflect the official views or policy of CMS or HHS, and any reference to a specific product or entity herein does not constitute endorsement of that product or entity by CMS or HHS. Publication #12SOW-I PRO-QIN-T1-AA-22-837



■ Healthcentric  
Advisors  
■ QIarant

QIN-QIO  
Quality Innovation Network -  
Quality Improvement Organizations  
CENTERS FOR MEDICARE & MEDICAID SERVICES  
IQALITY IMPROVEMENT & INNOVATION GROUP

# The IPRO QIN-QIO

## The IPRO QIN-QIO

- A federally-funded Medicare Quality Innovation Network – Quality Improvement Organization (QIN-QIO)
- 12 regional CMS QIN-QIOs nationally

### IPRO:

New York, New Jersey, and Ohio

### Healthcentric Advisors:

Connecticut, Maine, Massachusetts, New Hampshire, Rhode Island, and Vermont

### Qlarant:

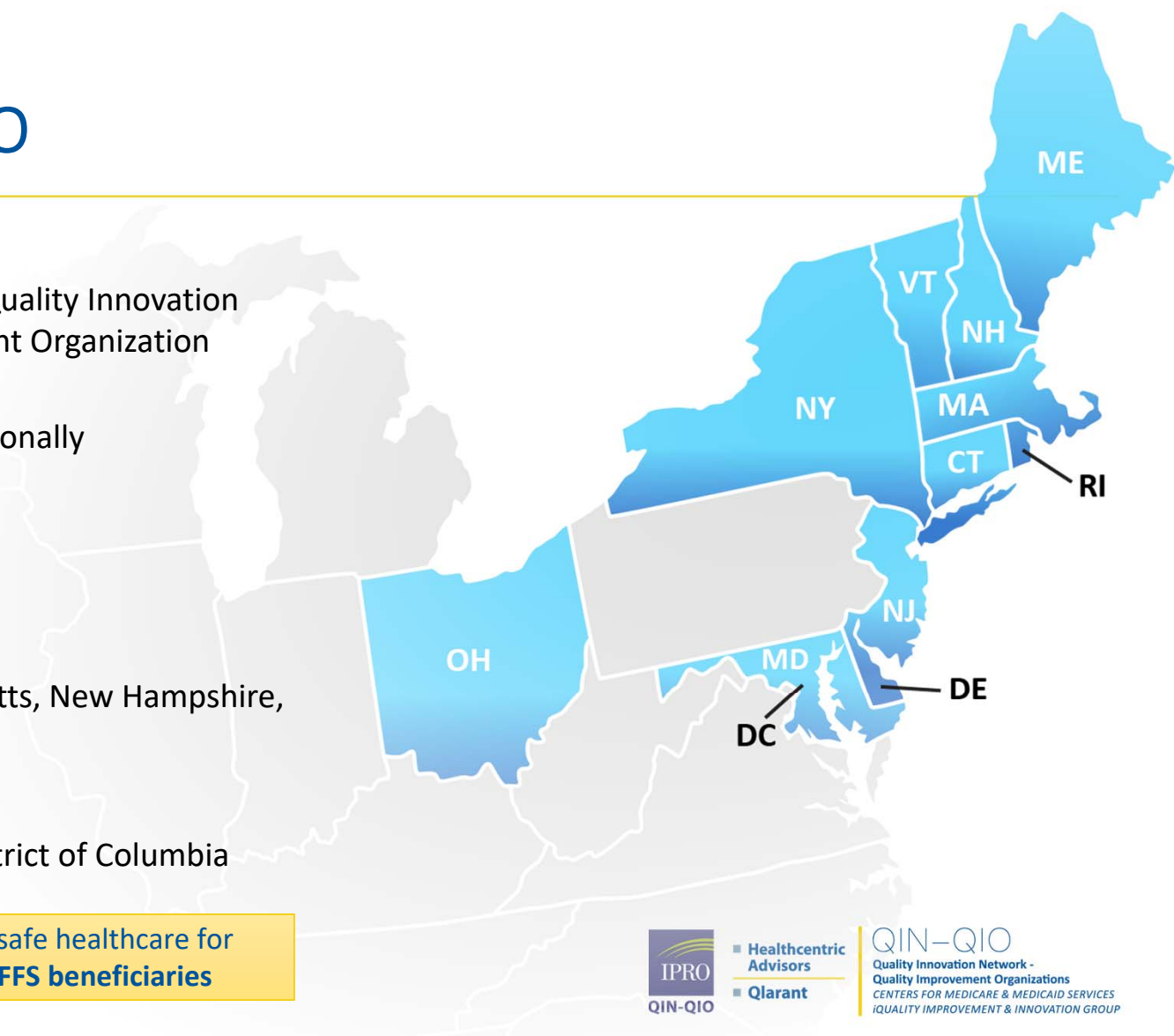
Maryland, Delaware, and the District of Columbia

Working to ensure high-quality, safe healthcare for  
**20% of the nation's Medicare FFS beneficiaries**



■ Healthcentric  
Advisors  
■ Qlarant

QIN-QIO  
Quality Innovation Network -  
Quality Improvement Organizations  
CENTERS FOR MEDICARE & MEDICAID SERVICES  
EQUALITY IMPROVEMENT & INNOVATION GROUP



# Agenda

---

- Recent Survey
- COVID-19 Bivalent
- Topic- Review UTI and CDI/F
- Future topics



■ Healthcentric  
Advisors  
■ QIarant

QIN-QIO  
Quality Innovation Network -  
Quality Improvement Organizations  
CENTERS FOR MEDICARE & MEDICAID SERVICES  
IQALITY IMPROVEMENT & INNOVATION GROUP

# Survey

---

- Peer discussion
- Focus



■ Healthcentric  
Advisors  
■ QIarant

QIN-QIO  
Quality Innovation Network -  
Quality Improvement Organizations  
CENTERS FOR MEDICARE & MEDICAID SERVICES  
IQALITY IMPROVEMENT & INNOVATION GROUP

# INFLUENZA UPDATE (as of 12.2.22)

2022-23 Influenza Season Week 47 ending Nov 26, 2022



- Activity is high and continues to increase
- H3N2 dominant strain, followed by H1N1
- Illness and hospitalization rates are higher at this time than for the past decade
- 8.7 million illnesses
- 78,000 hospitalizations
- 4,500 deaths
- Flu vaccine continues to be a good match

[National Influenza Immunization Week](#)

<https://www.cdc.gov/flu/weekly/index.htm>

# COVID VACCINE Booster Update

---

## Hospitalizations:

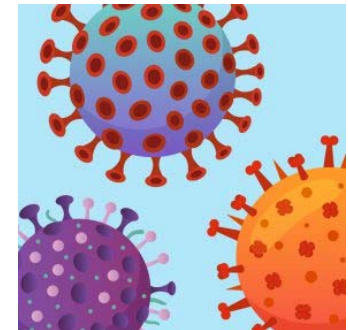
- Increase of **27.1%** (7 day average 4,650)

## Bivalent Booster

- 39.7 million have received updated booster dose as of 11/30/22
- 32.6% adults  $\geq$  65 have received an updated Bivalent booster

## Latest Variants (as of 11.7.22)

- There is a new “[Variant Summary](#)” CDC page on the [COVID Data Tracker](#)
- Current strains circulating:
  - BQ 1.1 : 31.9%
  - BQ.1: 30.9%
  - BA.5: 13.8%
  - BA. 4.6: 2.3%



# IPRO Resource for Immunization

---

- [COVID-19 Bivalent Quality Improvement Action Plan – IPRO QIN-QIO Resource Library](#)
- [COVID-19 Booster Power Point for Resident & Family Council Meetings – IPRO QIN-QIO Resource Library](#)
- [COVID-19 Vaccine Flyer – IPRO QIN-QIO Resource Library](#)
- [Friends and Family Vaccine Clinic Toolkit – IPRO QIN-QIO Resource Library](#)
- [Influenza, Pneumococcal and COVID-19 Immunization Toolkit – IPRO QIN-QIO Resource Library](#)
- [Influenza What You Need to Know – IPRO QIN-QIO Resource Library](#)
- [Pneumococcal Vaccine Flyer – IPRO QIN-QIO Resource Library](#)



*Clostridioides difficile (C.diff)*  
**ONE CASE IS TOO MUCH**



- Healthcentric Advisors
- Qlarant

QIN-QIO  
Quality Innovation Network -  
Quality Improvement Organizations  
CENTERS FOR MEDICARE & MEDICAID SERVICES  
QUALITY IMPROVEMENT & INNOVATION GROUP



# Targeted Assessment for Prevention (TAP) in LTC for C-Diff Infection

- This assessment that was created by the CDC was adapted by your QIN-QIO for use in LTC to evaluate your processes regarding Infection Prevention specifically to address C-Diff Infection.
- Available on paper and electronically.
- Interactive workgroups have been scheduled to review AGGREGATE data.
- Interactive workgroups will discuss opportunities for improvement, and best practices and the QIN-QIO will provide tools, resources, and education targeted to these improvement areas.
- Group will electronically complete the Assessment again in February and meet in March to review the improvements made/noted.

**Notes for the Respondent:**

- This assessment is meant to capture your awareness and perceptions of policies and practices.
- Responses should refer to what is currently in place at the facility or unit in which the assessor.
- Please use the comment boxes to elaborate and capture information as needed – such details.
- For any “Yes” or “Unknown” answers, reference to address these gaps.

**Section I: General Infrastructure, Capacity, and Processes**

1. Does your facility have a policy related to CDI (Clostridioides difficile infection or C. diff) infection?	<input type="radio"/> Yes	<input type="radio"/> No	<input type="radio"/> Unknown
2. Does your facility's senior leadership actively promote prevention of CDI (Clostridioides difficile infection or C. diff) infection?	<input type="radio"/> Yes	<input type="radio"/> No	<input type="radio"/> Unknown
3. Does your facility have a team/workgroup focused on CDI prevention?	<input type="radio"/> Yes	<input type="radio"/> No	<input type="radio"/> Unknown
4. Does your facility have a critical champion for CDI prevention?	<input type="radio"/> Yes	<input type="radio"/> No	<input type="radio"/> Unknown
5. Is unit-level leadership involved in CDI prevention?	<input type="radio"/> Yes	<input type="radio"/> No	<input type="radio"/> Unknown
6. Does your facility have unlicensed staff champions for CDI prevention?	<input type="radio"/> Yes	<input type="radio"/> No	<input type="radio"/> Unknown

**Section II: Training Specific to C. diff**

7. Does your facility provide training on hand hygiene specific to C. diff to staff at least once per year?	<input type="radio"/> Yes	<input type="radio"/> No	<input type="radio"/> Unknown
8. Does your facility provide a knowledge assessment on hand hygiene specific to C. Difficile (i.e., with soap and water) at least once per year?	<input type="radio"/> Yes	<input type="radio"/> No	<input type="radio"/> Unknown
9. Does your facility conduct a knowledge assessment (e.g., quiz, test) on hand hygiene to staff at least once per year?	<input type="radio"/> Yes	<input type="radio"/> No	<input type="radio"/> Unknown
10. Does your facility conduct a skills assessment (i.e., staff demonstration of tasks) on hand hygiene to staff at least once per year?	<input type="radio"/> Yes	<input type="radio"/> No	<input type="radio"/> Unknown
11. Does your facility provide training on use of personal protective equipment (PPE) (i.e., gown, gloves) to staff at least once per year?	<input type="radio"/> Yes	<input type="radio"/> No	<input type="radio"/> Unknown

- General Infrastructure, Capacity, and Processes
- Training Specific to C-diff
  - Hand hygiene, PPE, contact precautions, environmental cleaning
  - Questions to determine if your facility has training,
  - knowledge assessment, skills assessment on each topic
- Audits and Feedback
  - Hand hygiene, Contact precautions, environmental cleaning/disinfection
- Antibiotic Stewardship
- Early Detection and Isolation, Appropriate Testing
- Contact Precautions/ Hand Hygiene
- Environmental Cleaning



Healthcentric  
Advisors  
QIarant

QIN-QIO  
Quality Innovation Network -  
Quality Improvement Organizations  
CENTERS FOR MEDICARE & MEDICAID SERVICES  
QUALITY IMPROVEMENT & INNOVATION GROUP

# REDCap survey

**If interested in participating – it is NOT too late!**

There are three sections- screenshot seen here. Links to the electronic Assessment can be emailed to you- contact:

[Dseney@ipro.org](mailto:Dseney@ipro.org)

Part 1:

<https://redcap.ipro.org/surveys/?s=MRJPD9NA4LMM48HK>

Part 2:

<https://redcap.ipro.org/surveys/?s=EDRC4FFNW8FJKCFW>

Part 3:

<https://redcap.ipro.org/surveys/?s=FLDC99XF3F499C7L>

## C. diff LTC Assessment Tool

AAA  
🔍 🗨

Please answer the questions below.

Date of assessment <small>* must provide value</small>	<input type="text"/>
Facility Name <small>* must provide value</small>	<input type="text"/>
Facility Address <small>* must provide value</small>	<input type="text"/>
Facility CCN Look up your CCN here : <a href="#">NURSING HOME COMPARE</a> <small>* must provide value</small>	<input type="text"/>
Name of person completing the tool <small>* must provide value</small>	<input type="text"/>
Role of person completing the tool <small>* must provide value</small>	<input type="text"/>
Years of experience at the facility <small>* must provide value</small>	<input type="text"/>
Email of person completing the tool <small>* must provide value</small>	<input type="text"/>
Phone number for person completing the tool <small>* must provide value</small>	<input type="text"/>



Healthcentric  
Advisors  
QIarant

QIN-QIO  
Quality Innovation Network -  
Quality Improvement Organizations  
CENTERS FOR MEDICARE & MEDICAID SERVICES  
EQUALITY IMPROVEMENT & INNOVATION GROUP

An interview with a survivor.....

ONE CASE IS TOO MANY



# *A C. difficile* Patient Survivor Story

-Use at Skills Fairs, New Staff Orientation/On-Boarding

[HQIC Antibiotic Stewardship Workgroup: Clostridioides difficile Module – IPRO NQIC](#)

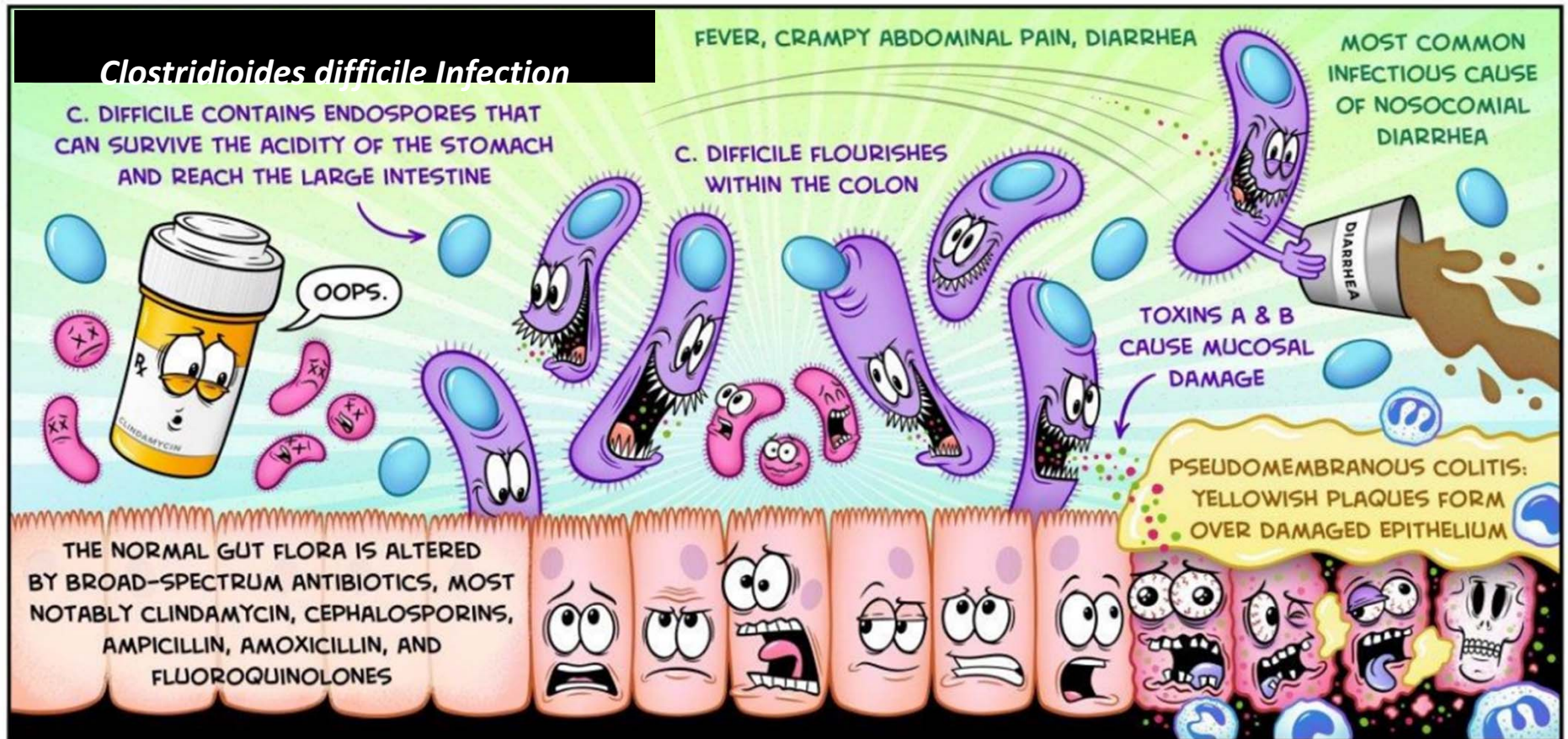
- <https://www.youtube.com/watch?v=XwFlv4UIF8g> (45 min video)



■ Healthcentric  
Advisors  
■ Qlarant

QIN-QIO  
Quality Innovation Network -  
Quality Improvement Organizations  
CENTERS FOR MEDICARE & MEDICAID SERVICES  
EQUALITY IMPROVEMENT & INNOVATION GROUP

# Why Stewardship?



# Announcing UTI Learning Circle Workgroups

Peer to Peer Interactions, Best Practices and Subject Matter Experts

First Event- 1-25-23, 12- 1pm EST

Second Event- 4-26-23, 12-1pm EST



■ Healthcentric  
Advisors  
■ QIarant

QIN-QIO  
Quality Innovation Network -  
Quality Improvement Organizations  
CENTERS FOR MEDICARE & MEDICAID SERVICES  
QUALITY IMPROVEMENT & INNOVATION GROUP

## Learning Circle Workgroup Content- 1-25-23

- Share antibiogram data as a group and discuss how to use the data to evaluate empiric therapy selections in the facility guidelines
- Subject Matter Expert (ID Physician) will discuss top 5 tips for successful urinary tract infection stewardship
- Review the content of IPRO template urinary tract infection action plans and select 1 SMART goal to implement with an intervention before the second event in April.
- Discuss and share resources to educate residents and care givers on antibiotic stewardship



■ Healthcentric  
Advisors  
■ QIarant

QIN-QIO  
Quality Innovation Network -  
Quality Improvement Organizations  
CENTERS FOR MEDICARE & MEDICAID SERVICES  
IQALITY IMPROVEMENT & INNOVATION GROUP

# What do I have to do if I attend a learning circle?

---

- SPEAK UP – be an active participant – (no catching up on your emails during this call !). Be prepared to share and discuss
- Let us know what types of resources are most helpful to collect data about UTIs
- Answer our emails – we will be touching base between the sessions to see how you are using the information we provide and to see if you need any assistance with your SMART goal
- Check in the IPRO Resource Library to see if there are other tools or resources that would be useful
- Select an intervention appropriate for your facility based on the data you collected and implement it.
- Be ready to share your successes at the April meeting !



■ Healthcentric  
Advisors  
■ Qlarant

QIN-QIO  
Quality Innovation Network -  
Quality Improvement Organizations  
CENTERS FOR MEDICARE & MEDICAID SERVICES  
EQUALITY IMPROVEMENT & INNOVATION GROUP

# COVID Bundle Questions

<https://www.surveymonkey.com/r/COVIDBundle>



■ Healthcentric  
Advisors  
■ Qlarant

QIN-QIO  
Quality Innovation Network -  
Quality Improvement Organizations  
CENTERS FOR MEDICARE & MEDICAID SERVICES  
IQALITY IMPROVEMENT & INNOVATION GROUP



# Contact Us!

Joshua Clodius [jclodius@healthcentricadvisors.org](mailto:jclodius@healthcentricadvisors.org)

Quality Improvement Specialist: MA, CT, ME, NH, VT, RI

Danyce Seney [DSeney@ipro.org](mailto:DSeney@ipro.org)

Quality Improvement Specialist: NY, NJ, OH

Darlene Shoemaker [shoemakerd@qlarant.com](mailto:shoemakerd@qlarant.com)

Quality Improvement Consultant: MD, DE, DC

Melanie Ronda [mronda@ipro.org](mailto:mronda@ipro.org)

Assistant Director & Nursing Home Lead: NJ, NY, OH

Mary Ellen Casey [mcasey@healthcentricadvisors.org](mailto:mcasey@healthcentricadvisors.org)

Sr. Quality Improvement Manager: MA, CT, ME, NH, VT, RI



■ Healthcentric  
Advisors  
■ Qlarant

QIN-QIO  
Quality Innovation Network -  
Quality Improvement Organizations  
CENTERS FOR MEDICARE & MEDICAID SERVICES  
QUALITY IMPROVEMENT & INNOVATION GROUP

# Visit qi.ipro.org

<https://qi.ipro.org/>

Working to ensure high-quality, safe, and effective health care.

As the **IPRO QIN-QIO**, we bring together communities of healthcare providers across the care continuum, stakeholders, and patients in data-driven initiatives to achieve national health quality goals.

As the **IPRO HQIC**, we provide targeted quality improvement assistance to small, rural, critical access hospitals, and additional hospitals requiring technical assistance.

**View Events** **View our Blog**

**Highlighted Blog Posts**

**We've added new COVID-19 resources** **Read More**

**Free Training: Nursing Home COVID-19 Preparedness** **Read More**

**f** @IPROQINQIO

**t** @IPROQINQIO

**in** @IPRO QIN-QIO

**▶** IPRO QIN-QIO



■ **Healthcentric Advisors**  
■ **Qlarant**

**QIN-QIO**  
Quality Innovation Network -  
Quality Improvement Organizations  
CENTERS FOR MEDICARE & MEDICAID SERVICES  
QUALITY IMPROVEMENT & INNOVATION GROUP