



Healthcentric Advisors ■ Qlarant  
 Kentucky Hospital Association  
 Q3 Health Innovation Partners  
 Superior Health Quality Alliance

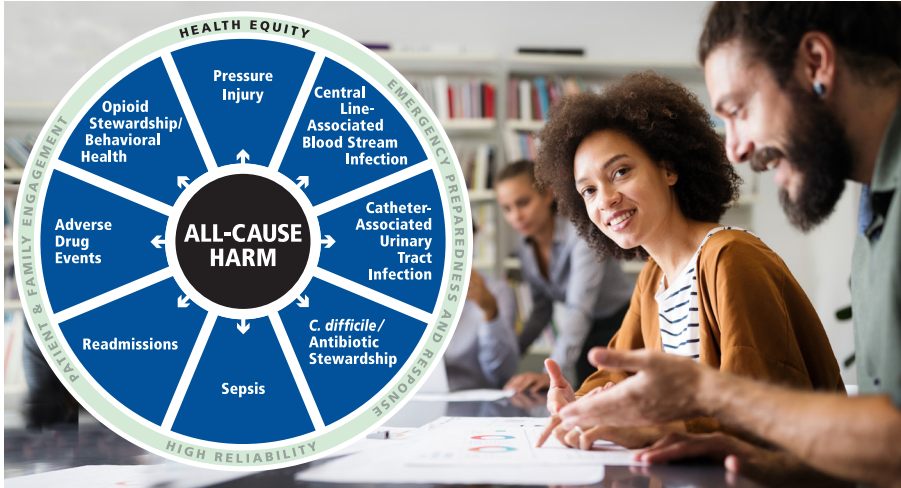
HQIC

Hospital Quality Improvement Contractors  
 CENTERS FOR MEDICARE & MEDICAID SERVICES  
 EQUALITY IMPROVEMENT & INNOVATION GROUP



# HEALTH EQUITY GUIDE

August 2024



## CMS Releases Updated Health Equity Factsheet

The Centers for Medicare & Medicaid Services' (CMS) updated health equity factsheet outlines how CMS' health equity actions align with its **strategic pillars**: 1) advance equity, 2) expand access, 3) engage partners, 4) drive innovation, 5) protect programs, and 6) foster excellence. Examples of current efforts include screening to identify and address health-related social needs; promoting culturally and linguistically appropriate services (CLAS); and reducing disparities in access, quality, and outcomes.

## Equity in Public Health Emergency Management

Meaningful community engagement is crucial in advancing health equity in emergency preparedness. Active collaboration with community members and partners from diverse backgrounds ensures that racial, ethnic, cultural, and linguistic considerations are integrated into response plans<sup>1</sup>. Guidelines for incorporating these features in response plans include:

- Inclusivity:** Engage with all segments of the community, including historically underserved populations, **people with disabilities, the elderly, and minority groups**.<sup>2</sup>
- Collaboration:** Work with community organizations, local leaders, and residents to establish **expectations and implement actions that are appropriate and achievable during a response**.<sup>3</sup>
- Data-Informed Decision Making:** Collect, share, and use data to inform equity-driven decisions.<sup>4</sup>

- <https://www.ruralhealthinfo.org/toolkits/emergency-preparedness/1/community-needs>
- <https://www.naccho.org/blog/articles/developing-emergency-preparedness-plans-with-a-health-equity-focus>
- <https://kingcounty.gov>
- <https://nap.nationalacademies.org/read/26805/chapter/5>

## August Health Observances

**National Minority Donor Awareness Month, National Immunization Awareness Month, and International Overdose Awareness Day**

The Gift of Life Donor Program offers **education** on organ donation and transplantation with a focus on communities of color.

The Centers for Disease Control and Prevention provides **tools** for raising awareness about the importance of vaccinations.

The Centers for Disease Control and Prevention provides **strategies** to prevent opioid misuse and treat opioid use disorders.

## Rural/CAH Corner

**Limited Access Hampers Rural Health Care**



Rural Americans lack access to emergency services and specialty care, while also facing transportation barriers. National Public Radio explored access to healthcare in a Georgia town and found that one of the services most lacking is mental health care due to stigma and lack of mental health providers.

**Rural Outreach Workers Address Opioid Addiction Recovery Misconceptions**

As part of efforts to address the opioid crisis, recovery advocates and local leaders in Snohomish County, WA, hold community discussions to reduce stigma and misconceptions about opioid use recovery, provide free transportation to recovery clinics, and train community-based peer recovery workers.

## In the News

### [Disparities in Mental Health Care](#)

Findings from the [Kaiser Family Foundation \(KFF\) 2023 Survey of Racism, Discrimination and Health](#) indicate that “among adults who report fair or poor mental health, White adults (50%) are more likely to say they received mental health services in the past three years compared with Black (39%) and Hispanic adults (36%).” Cost, scheduling, stigma, and lack of culturally diverse providers are cited as the main barriers to mental healthcare.

### [LGBTQ Health Survey Highlights Gaps in Care](#)

The second annual study by the National Coalition for LGBTQ Health found that most providers are comfortable providing culturally competent care. However, there is still a need for provider training to create inclusive spaces, address stigma, and tackle health disparities.

### [Health Equity Program Funds Broadband Access](#)

Managed Health Services (MHS), the Indiana Minority Health Coalition, and Blank Onyx Management have launched the Broadband Access Strategic Partnership, the first initiative of “MHS Serves,” a \$12 million health equity program designed to support community-based initiatives in reducing health disparities across Indiana. As the first program of MHS Services, this initiative will provide funding to partner organizations to support internet and technology adoption in marginalized communities.



For more health equity news: <https://qi.ipro.org/health-equity-resources>

## Upcoming Events

### [Transforming Rural Healthcare: Value-Based Care and Health Equity in Action](#)

NYU Langone Health

August 13, 2024

12:00–1:00 PM ET

### [Understanding Stigma and Discrimination as Drivers of Mental Health Disparities for Diverse, Rural, LGBTQ+ Communities](#)

National Institute of Mental Health

August 22, 2024

1:30-3:00 PM ET

For a PDF version of this newsletter, including hyperlinks to resources for additional information, scan this QR code.



Or follow this link:  
[bit.ly/43iLAyH](https://bit.ly/43iLAyH)